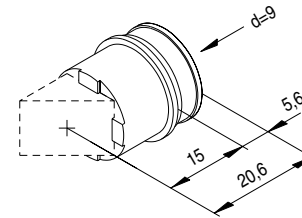
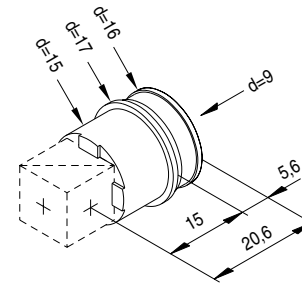




OPTIC HOLDER FOR PRISMS MOH P

Optic holder for beam splitter
or prisms.

Optics size:
10 mm x 10 mm x 10 mm
fixed by glue
Aperture: 9 mm

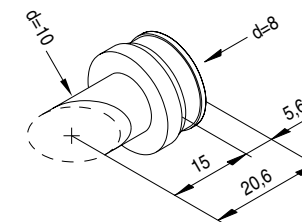


Match Code	Order No.
MOH P	3018-9-100

OPTIC HOLDER FOR MIRRORS MOH MI

Optic holder for elliptical mirrors.

Optics size:
elliptic 10 mm x 14 mm
fixed by glue
Aperture: 9 mm



Match Code	Order No.
MOH MI	3018-9-110

